

Infoveranstaltung 05/05/2022:
Wissenschaftsregion Oberrhein:
Möglichkeiten und Förderinstrumente für
bi- und trinationale Kooperationen

Journée d'information 05/05/2022:
Le Rhin supérieur, territoire scientifique :
opportunités et financement pour la
coopération bi- et trinationale

Session 4:

The transnational INTERREG programmes North-West Europe and Alpine Space

Anne ROUESSARD, consultant on EU funding

Document's last update: 04/05/2022

Content

- 1) Overall context
- 2) The North-West Europe programme
- 3) The Alpine Space programmme
- 4) Questions & answers

**Overall context:
the INTERREG programmes
as part of the EU Cohesion policy**

3

3

Transnational cooperation in the ETC policy goal

INTERREG 2021-27 : 4 strands :

A) Cross-border cooperation

Cooperation of territories alongside a border

B) Transnational cooperation

Cooperation of territories in a wider geographical space

C) Interregional cooperation

Cooperation between territories in the whole EU

D) Cooperation of the Outermost regions with their neighbours

8 billion euros :

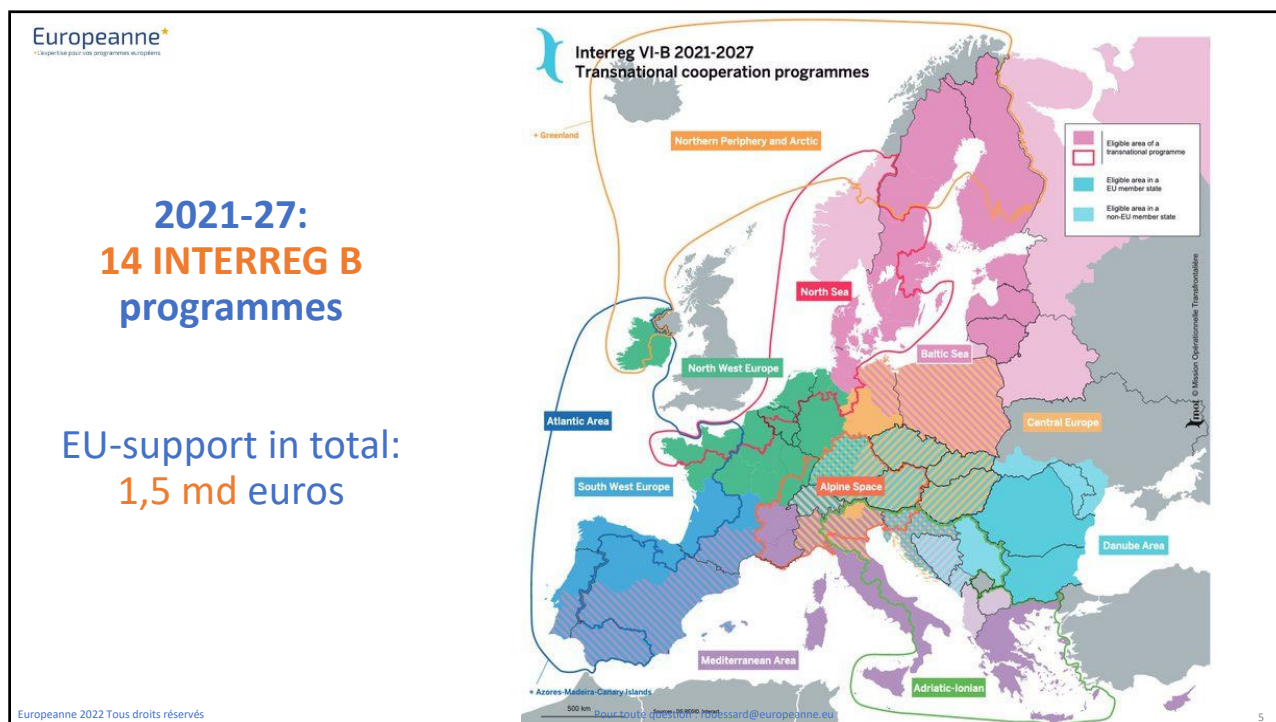
72%

18%

6%

3,5 %

4



5

Europeanne*
Expertise pour les programmes européens

INTERREG B programmes

Must contribute to the major EU strategic goals for 2021-27, notably :

- The Green Deal
- A Europe fit for the digital age
- A Europe that works for people

=> All transnational programmes have developed a programming strategy based on the 5 political objectives of the EU cohesion policy :

1. A more competitive and smarter Europe ;
2. A greener, low-carbon transitioning towards a net zero carbon economy and resilient Europe ;
3. A more connected Europe ;
4. A more social and inclusive Europe ;
5. A Europe closer to citizens.

Europeanne 2022 Tous droits réservés

Pour toute question : rouessard@europeanne.eu

6

Very important: INTERREG are **not** RDI programmes

The INTERREG programmes are part of the EU **cohesion** policy

=> They aim at forstering the **territorial development**

=> The projects must contribute to this goal:

- The **topic** is specific to the programme territory.
- The project produces **tangible** results (pilot actions, ...).
- The outcomes must be **exploitable** at a local level.
- The activities must target / involve territorial **stakeholders**.

=> RDI activities are possible but **only as part** of projects which are first centred on the needs, challenges or opportunities of the program area.

No "pure" RDI projects

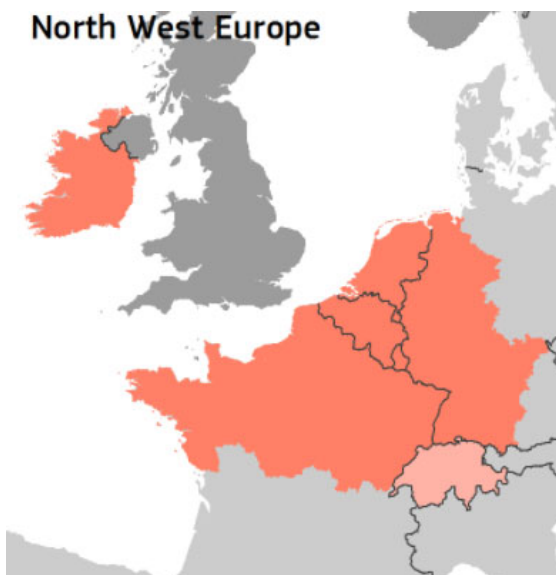
To be selected, the projects:

- Must contribute to the achievement of the programme **objectives**.
- Must be **innovative**: go beyond the current situation.
- Must **jointly** tackle common **territorial** challenges and/or opportunities.

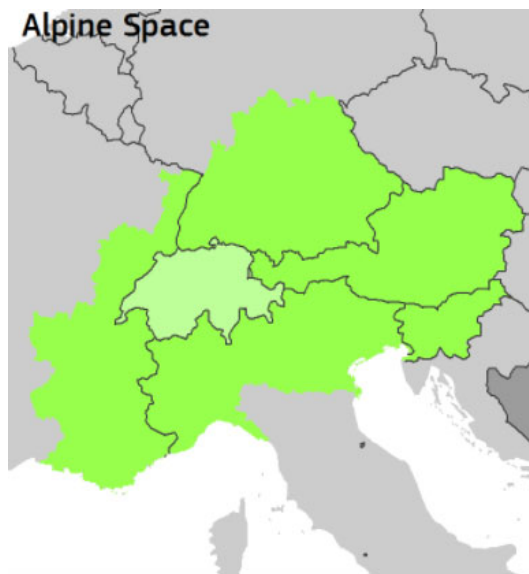
7

INTERREG B programmes covering the Upper Rhine region

North West Europe



Alpine Space



8

Europeanne*
L'expertise pour vos programmes européens

Main common characteristics of both programmes

- ❑ Working language: **English**.
- ❑ Application in **two steps**. 1-2 **calls for projects** each year.
- ❑ Information sources and support to projects:
 - Joint secretariates
 - National contact points
- ❑ Partnership:
 - Lead partner principle.
 - Important :
 - **Geographical** coverage of the whole programme area.
 - Mixture of partners **types**.
 - Associated partners / **observers** are possible but don't get EU funding.

NEW !
Dedicated calls for **Small-scale** projects

Europeanne 2022 Tous droits réservés Pour toute question : rouessard@europeanne.eu 9

9

Europeanne*
L'expertise pour vos programmes européens

CH participation

- ❑ The **whole Switzerland** territory is eligible to both programmes => CH partners **can** participate to both programmes.
- ❑ CH partners do **NOT** get EU funding.
- ❑ A **public CH co-funding** is possible :
 - On a national level: in the framework of the NRP (new regional policy) => contact the **ARE** (Swiss federal office for spatial development) as soon as possible.
 - On a local level.
- ❑ Conditions for the **NRP financing** :
 - It cannot exceed the one provided by cantons and municipalities
=> max. 50% of the public CH funding
 - Projects are granted financial support if they contribute to the consolidation of competitiveness, create added value in the regions or have a national strategic importance.

Europeanne 2022 Tous droits réservés Pour toute question : rouessard@europeanne.eu 10

10

Content

- 1) Overall context
- 2) The North-West Europe programme
- 3) The Alpine Space programme
- 4) Questions & answers

11

Interreg 
North-West Europe

12

Europeanne*
*Expertise pour les programmes européens

Main characteristics

Motto : “Promote a green, smart and just **transition** for all NWE territories”

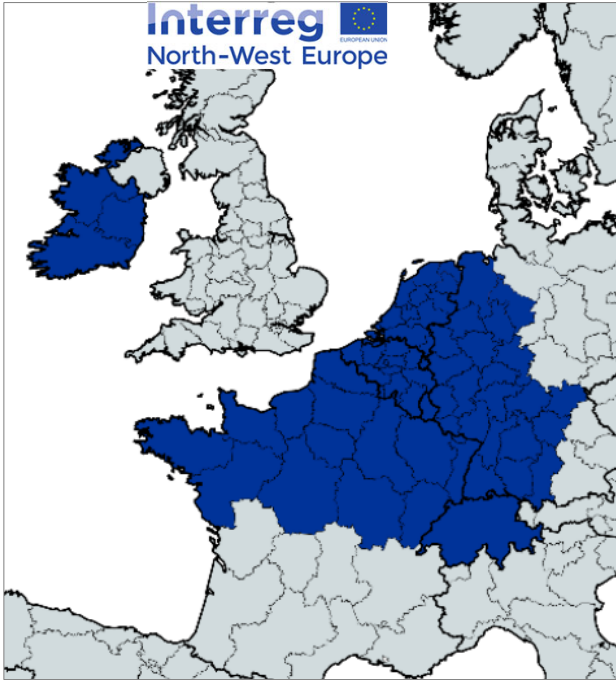
EU support 21-27 : **287 M euros**
(NB. the biggest transnational programme)

7 countries from Ireland to Switzerland

EU-cofinancing rate: **60%**

Europeanne 2022 Tous droits réservés

Interreg
North-West Europe



Pour toute question : rouessard@europeanne.eu

13

Europeanne*
*Expertise pour les programmes européens

Programme priorities

1. **Climate and environment (63 M euros):**
 - Climate change adaptation, disaster risk prevention, resilience, taking into account ecosystem-based approaches (SO 2.4).
 - Protection and preservation of nature, biodiversity and green infrastructure, including in urban areas, reduction of all forms of pollution (SO 2.7).
2. **Energy transition (57 M euros):**
 - Energy efficiency and greenhouse gas emissions reduction (SO 2.1).
 - Renewable energy (SO 2.2).
3. **Circular economy (55 M euros):** Transition towards a circular and resource efficient economy (SO 2.6).
4. **Innovation and resilience (58 M euros):** **Developing and enhancing research and innovation capacities and the uptake of advanced technologies (SO 1.1).**
5. **Inclusive society (54 M euros):**
 - Enhancing the effectiveness and inclusiveness of labour markets and access to quality employment through developing social infrastructure and promoting social economy (SO 4.1).
 - Ensuring equal access to health care and fostering resilience of health systems, including primary care, and promoting the transition from institutional to family-and-community-based care (SO 4.5).
 - Enhancing the role of culture and sustainable tourism in economic development, social inclusion and social innovation (SO 4.6).


Europeanne 2022 Tous droits réservés

Interreg
North-West Europe

Innovation in all POs


Pour toute question : rouessard@europeanne.eu

14



Europeanne*
*Opportunité pour les programmes européens

Project characteristics



Interreg
North-West Europe

- ❑ Project duration : in average **3/4 years**.

- ❑ Project budget : **2 to 6 M euros**.

- ❑ Must **combine at least two** of the three types of programme activities:
 - Elaboration and implementation of **joint** strategies and/or action plans.
 - Joint development and implementation of **pilot actions** testing tools and/or solutions.
 - **Capacity** building and awareness raising activities (incl. joint trainings).

- ❑ Expected **outcomes**:
 - strategies and action plans
 - Pilot actions
 - Capacity building / training schemes

Europeanne 2022 Tous droits réservés
Pour toute question : rouessard@europeanne.eu
15

15



Europeanne*
*Opportunité pour les programmes européens

Project partnership



Interreg
North-West Europe

- ❑ Rule: The project involves **at least 3 partners** from 3 different countries.
Reality: in average: 4 to 10 partners.

- ❑ At least **2 of these partners** must be from a region within the NEW Programme area
=> some partners can be located **outside** the NWE area.

- ❑ The **Lead partner** must be:
 - From an EU Member State => **no CH Lead partner** in NWE.
 - A public organisation, a non-profit organisation or an organisation governed by public law.

Europeanne 2022 Tous droits réservés
Pour toute question : rouessard@europeanne.eu
16

16

Europeanne*
L'expertise pour vos programmes européens

Application process

Interreg
North-West Europe

❑ Two-step application :

1. **Step 1: short** project description:
 - the project need (NWE objectives) and the main goal of the project,
 - the proposed approach towards this challenge and its innovative character,
 - the outputs you will produce and who will benefit from them,
 - the partnership relevance (compared to the proposed activities and the expected results).

Indicate the estimated project budget (total budget + approx. EU-grant requested)
2. **Step 2: full** application form with more details on
 - Each of the aforementioned points ;
 - Complete work plan ;
 - Detailed budget.

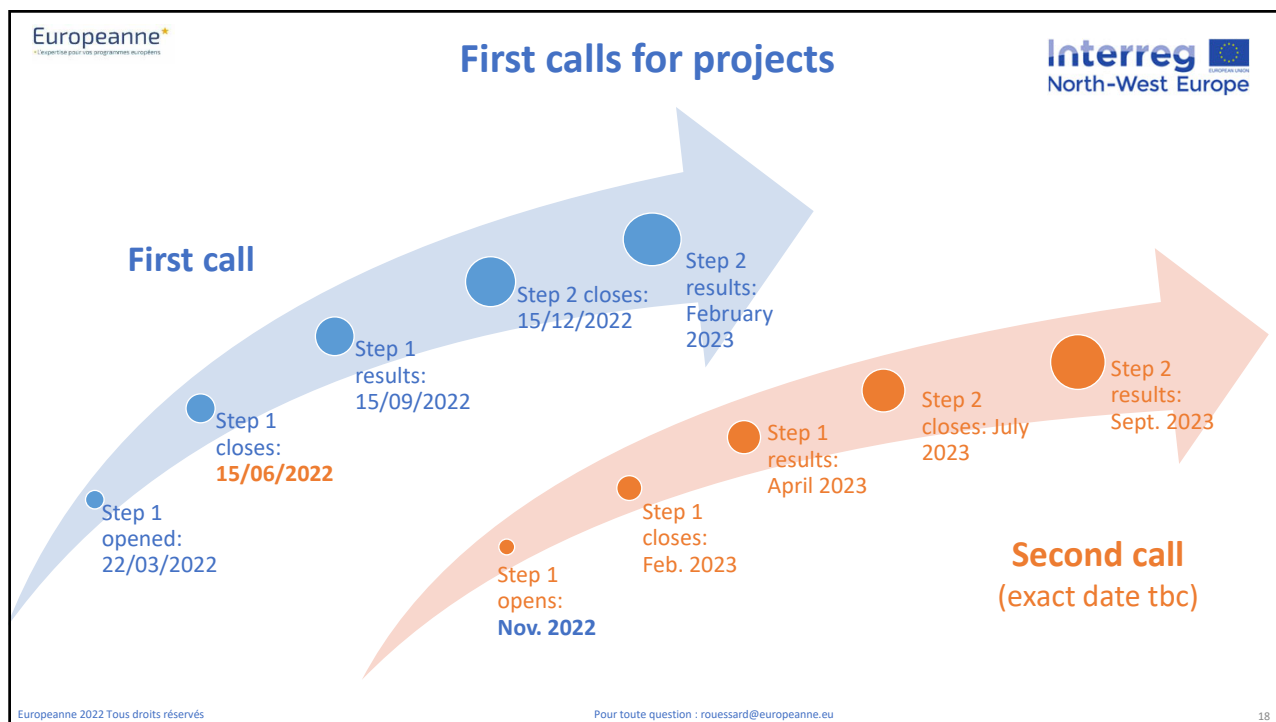
❑ The application is written in **English**, but the project summary must be provided in the **4 programme languages**: English + French + Dutch + German.

Europeanne 2022 Tous droits réservés

Pour toute question : rouessard@europeanne.eu

17

17



18






More information


- ❑ Programme website : <http://www.nweurope.eu/>
- ❑ National contact points :
 - FR (Lille): Alexandre Tournakis
Mail: alexandre.tournakis@hautsdefrance.fr
 - CH (Berne) : Sebastien Rieben
Mail: interreg@are.admin.ch
 - DE (Mainz):
 - Kerstin Buttler
kerstin.buttler@mdi.rlp.de
 - Elisabeth Wauschkuhn
elisabeth.wauschkuhn@mdi.rlp.de

FR NCP will soon be based in the Grand Est region

Europeanne 2022 Tous droits réservés Pour toute question : rouessard@europeanne.eu

19





Project examples with RDI activities

- ❑ **RE-DIRECT**: Converting residual biomass into carbon products and activated carbon.
Upper Rhine partner: Eigenbetrieb Umwelttechnik der Stadt Baden-Baden (DE)
- ❑ **RIGHTWEIGHT**: Developing new lightweight material for transport
Upper Rhine partner: KIT (DE)
- ❑ **AGRI-WASTE VALUE**: Transform agricultural by-products and residues into bioactive compounds
Upper Rhine partner: Prüf- und Forschungsinstitut Pirmasens e.V. (DE)

Europeanne 2022 Tous droits réservés 20

20

Content

- 1) Overall context
- 2) The North-West Europe programme
- 3) The Alpine Space programme
- 4) Questions & answers

21



22

Europeanne*
*Expertise pour les programmes européens

Main characteristics

Interreg Alpine Space

Motto: “Foster the integration of sustainable economic development, societal well-being and the preservation of its outstanding nature”

EU-support 21-27: 107 M euros

7 countries from France to Slovenia, including CH

EU-cofinancing rate: 75%

Europeanne 2022 Tous droits réservés

Pour toute question : rouessard@europeanne.eu

23

Europeanne*
*Expertise pour les programmes européens

Main characteristics

Interreg Alpine Space

*
Région Auvergne-Rhône-Alpes* : Ain, Ardèche, Drôme, Isère, Loire, Rhône, Savoie, Haute-Savoie
Région Bourgogne-Franche-Comté* : Doubs, Jura, Haute-Saône, Territoire de Belfort
Région Grand Est* : Bas-Rhin, Haut-Rhin

24

Europeanne*
le portail pour les programmes européens

Programme priorities

Innovation in all PO

Interreg
Alpine Space

- 1) **Climate resilient and green Alpine region (42 M euros)**
 - Promoting climate change adaptation and disaster risk prevention, and resilience, taking into account eco-system based approaches
 - Enhancing protection and preservation of nature, biodiversity and green infrastructure, including urban areas, and reducing all forms of pollution
- 2) **Carbon neutral and resource sensitive Alpine region (30 M euros)**
 - Promoting energy efficiency and reducing greenhouse gas emissions
 - Promoting the transition to a circular and resource efficient economy
- 3) **Innovation and digitalisation supporting a green Alpine region (23 M euros)**
 - Developing and enhancing **research and innovation capacities** and the uptake of advanced technologies
 - Reaping the benefits of digitalisation for citizens, companies, research organisations and public authorities
- 4) **Cooperatively managed and developed Alpine region (11 M euros)**
 - Enhance institutional capacity of public authorities and stakeholders to implement macro-regional strategies and sea-basin strategies, as well as other territorial strategies

Europeanne 2022 Tous droits réservés

Pour toute question : rouessard@europeanne.eu

25

25

Europeanne*
le portail pour les programmes européens

Project characteristics – classic projects

Interreg
Alpine Space

- The project involves **7 to 12 partners** from at least **4 different countries**.
- Project duration: **2 / 3 years**.
- Project budget: **1 to 3 M euros**.
- Must contribute to the programme's goals, especially the **EUSALP**: "European strategy for the Alpine region".
- Must combine **at least two activities** of the **policy-cycle concept**:
 - Strategic policy **development** activities through the elaboration of common strategies or methodologies;
 - Explorative and piloting activities to **test models or tools** and validate solutions that are applicable to different contexts;
 - Dissemination and capitalisation activities to encourage policy **implementation** across sectors and regions.

Europeanne 2022 Tous droits réservés

Pour toute question : rouessard@europeanne.eu

26

26

Europeanne*
Expertise pour les programmes européens

Calls for projects – classic projects

Interreg Alpine Space

- ❑ **Two-step** application, approx. every 12 months.
Content: as in NWE.
- ❑ **First call:**
 - Step 1 opened November 2021 and closed end of February 2022.
 - Selection: first week of May 2022.
 - Step 2: until the end of June 2022.
 - Final decision known: End of September 2022.
- ❑ **Second call:** expected to be open in **October 2022**.

Whole process:
approx. 1 year

62 applications.
29 selected for Step 2
(approx. 50%)

Europeanne 2022 Tous droits réservés

Pour toute question : rouessard@europeanne.eu

27

27

Europeanne*
Expertise pour les programmes européens

Project characteristics – Small-scale projects

Interreg Alpine Space

- ❑ **Total budget:** 250 K to 750 K euros.
- ❑ **Duration:** 12 to 18 months.
- ❑ **Partnership:** 3 to 6 partners.
- ❑ **Transnationality:** at least 3 countries.
- ❑ **Application:** one-step process.
- ❑ **First call** closed on 22nd April 2022. Decision: June 2022.
- ❑ **Second call** expected to be open in **Autumn 2022**. Decision: by the end of 2022.

63 applications

Europeanne 2022 Tous droits réservés

Pour toute question : rouessard@europeanne.eu

28

28

Europeanne*
Le portail pour les programmes européens

More information



- ❑ Programme website: <https://www.alpine-space.eu/>
- ❑ National contact points:
 - FR (Lyon): Chloé Ribaudeau
 Mail: chloe.ribaudeau@auvergnerhonealpes.fr
 ou: interreg.espacealpin@auvergnerhonealpes.fr
 - DE (München): Lisa Regina Horn
 Mail: Lisa.Horn@stmuv.bayern.de
 - CH (Berne) : Sebastien Rieben
 Mail: interreg@are.admin.ch


**/!\ National requirements:
 Mandatory for the application**

Europeanne 2022 Tous droits réservés Pour toute question : rouessard@europeanne.eu 29

29

Europeanne*
Le portail pour les programmes européens

Project examples with RDI activities



- ❑ **E-Smart**: Integrated e-mobility planning in the Alpine Space (focus: electric charging stations and electric mobile services)
 Upper Rhine partner: Pôle Véhicule du futur
- ❑ **CASCO**: Increasing material flows along processing chains in timber industry

Europeanne 2022 Tous droits réservés Pour toute question : rouessard@europeanne.eu 30

30

Content

- 1) Overall context
- 2) The North-West Europe programme
- 3) The Alpine Space programme
- 4) Questions & answers

31

Thank you for your attention

Questions?

rouessard@europeanne.eu

32